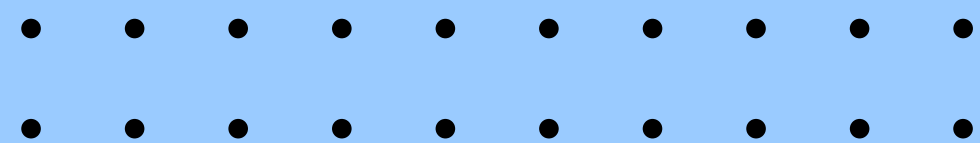




# 11TH MIRCELE 2022 OUTCOME REPORT

---

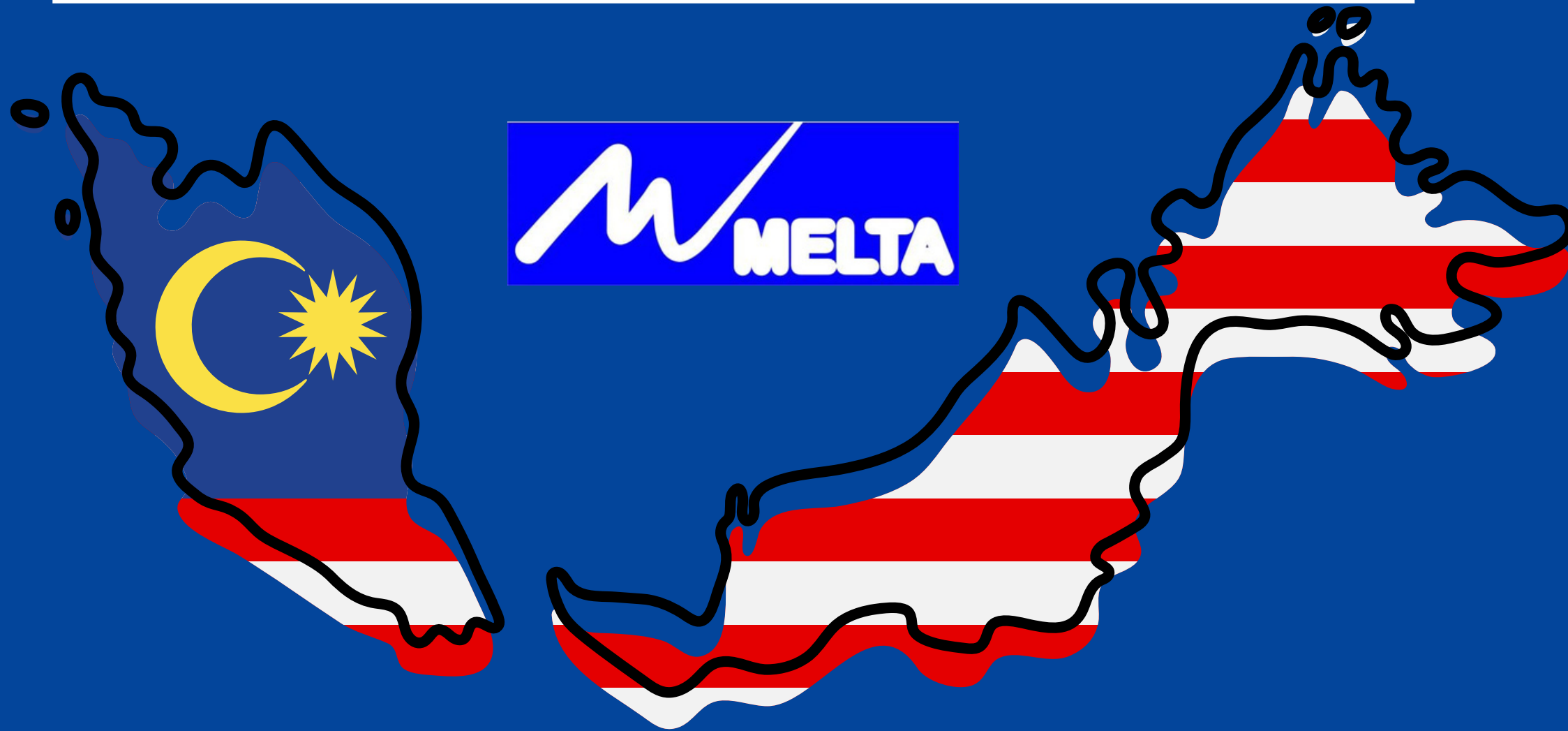
## & ACHIEVEMENTS





# MELTA – SINCE 1958

---



The Malaysian English Language Teaching Association (MELTA) is a voluntary, not-for-profit professional organisation. Tracing its roots to 1958, it is the oldest English language teaching association in Malaysia which continues to be guided by its constitutional aim of advancing English Language Education.




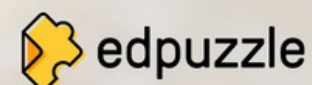
# PROGRAMME BOOK MIRCELE 2022

THE 11th MELTA INTERNATIONAL RESEARCH  
CONFERENCE IN ENGLISH LANGUAGE EDUCATION



17  
DEC  
2022

 <https://mircele2022.com>



MIRCELE was initially convened to support postgraduate students at Malaysian institutions of higher learning who were pursuing their studies in the area of ELT. The aim was to provide postgraduate students with a platform to come together and discuss their work and receive feedback from a panel of academics and experienced researchers.

Over the years, the conference has evolved to further include presentations by academics and teacher educators, teachers, and student teachers who wished to present their research in ELT.

# OBJECTIVES OF MIRCELE

---



**1**

To support knowledge sharing and knowledge generation in English Language Education through research

**2**

To provide researchers in the field of English Language Education a platform to discuss their research with peers who share a common interest in similar areas

**3**

To provide Malaysian academics, teacher educators, teachers, postgraduate students and student teachers with access to feedback from a panel of experts in the field of ELT so that they may further their research activities

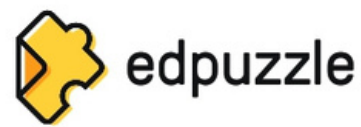
**4**

To provide a platform for conference delegates to collaborate and network with researchers working in similar areas of English Language Education





This year  
conference  
was  
sponsored  
by EDPuzzle,  
MELTA's  
2022/2023  
main  
sponsor.



## What is Edpuzzle?

Turn any video into a dynamic lesson

### 1 Choose your favorite video

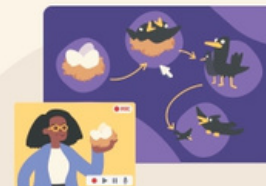
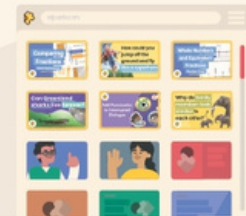
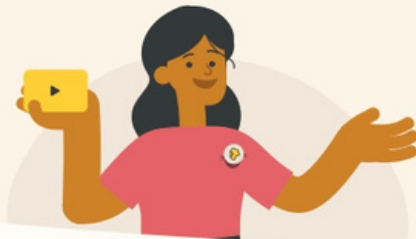
Browse teacher-created  
content

OR

Search our Edpuzzle  
Originals library

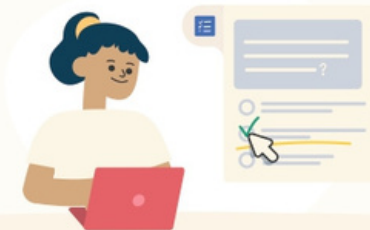
OR

Screen record  
your own video



### 2 Embed questions anywhere

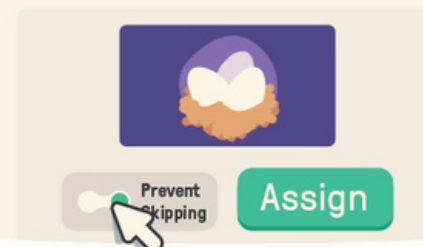
Promote critical thinking



Check comprehension

### 3 Assign your video lesson

Hold students  
accountable for  
watching



Let students learn at  
their own pace

### 4 Track students' progress

See which students  
are struggling



Decide how to best  
support students in  
class

Apply for a trial



Go to [edpuzzle.com](https://edpuzzle.com)  
and sign up today!



## Extra Information

### Who uses Edpuzzle?

More than **500K schools** worldwide, with more than **30M** interactive **video lessons**.

### Does it integrate with any LMS?

Edpuzzle integrates with Google **Classroom**, Microsoft **Teams**, Canvas, Moodle, Schoology, and more.

### Is Edpuzzle safe for my students?

Our safety measures are very strict, complying with the **GDPR** and using the **Standard Contractual Clauses ("SCC")** approved by the European Commission.

### Can all the schools in my group be connected in Edpuzzle?

Of course, we call it the Edpuzzle Network.

### Just do the following:

- Contact us at [int@edpuzzle.com](mailto:int@edpuzzle.com)
- Participate in one of our trainings
- Apply for your trial until the end of the school year.





# 2022 JOINT CHAIRS



**Dr Szarmilaa  
Dewie Krishnan**

*ELTC, MOE*



**Dr Lim  
Jia Wei**

*UNIVERSITI MALAYA*



The Wix logo, featuring the word "WIX" in a bold, black, sans-serif font. The letter "i" is stylized with a small orange dot above it.

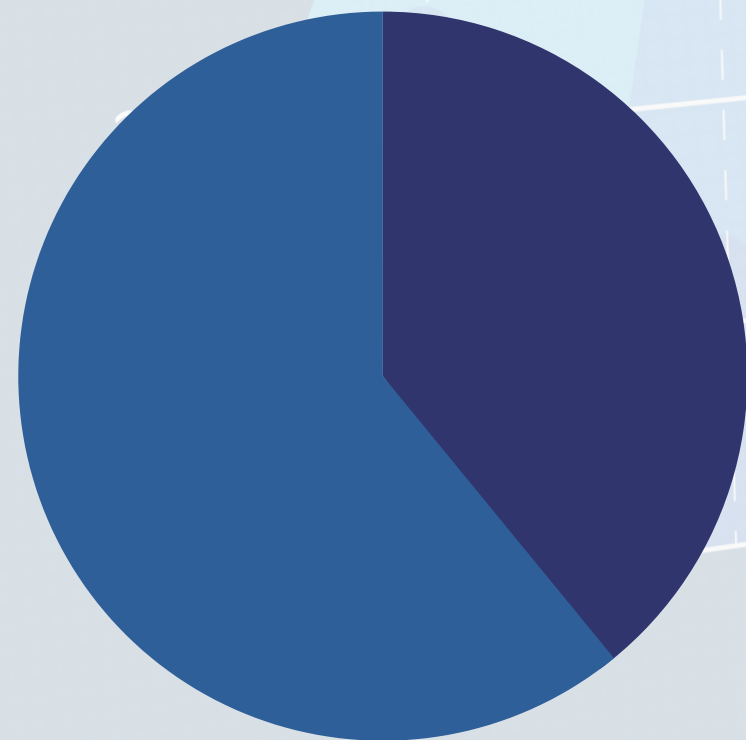
Microsoft  
Teams

**The online conference  
this year was run on  
several platforms such  
as Wix, Wordpress,  
Streamyard and  
Microsoft Teams.**

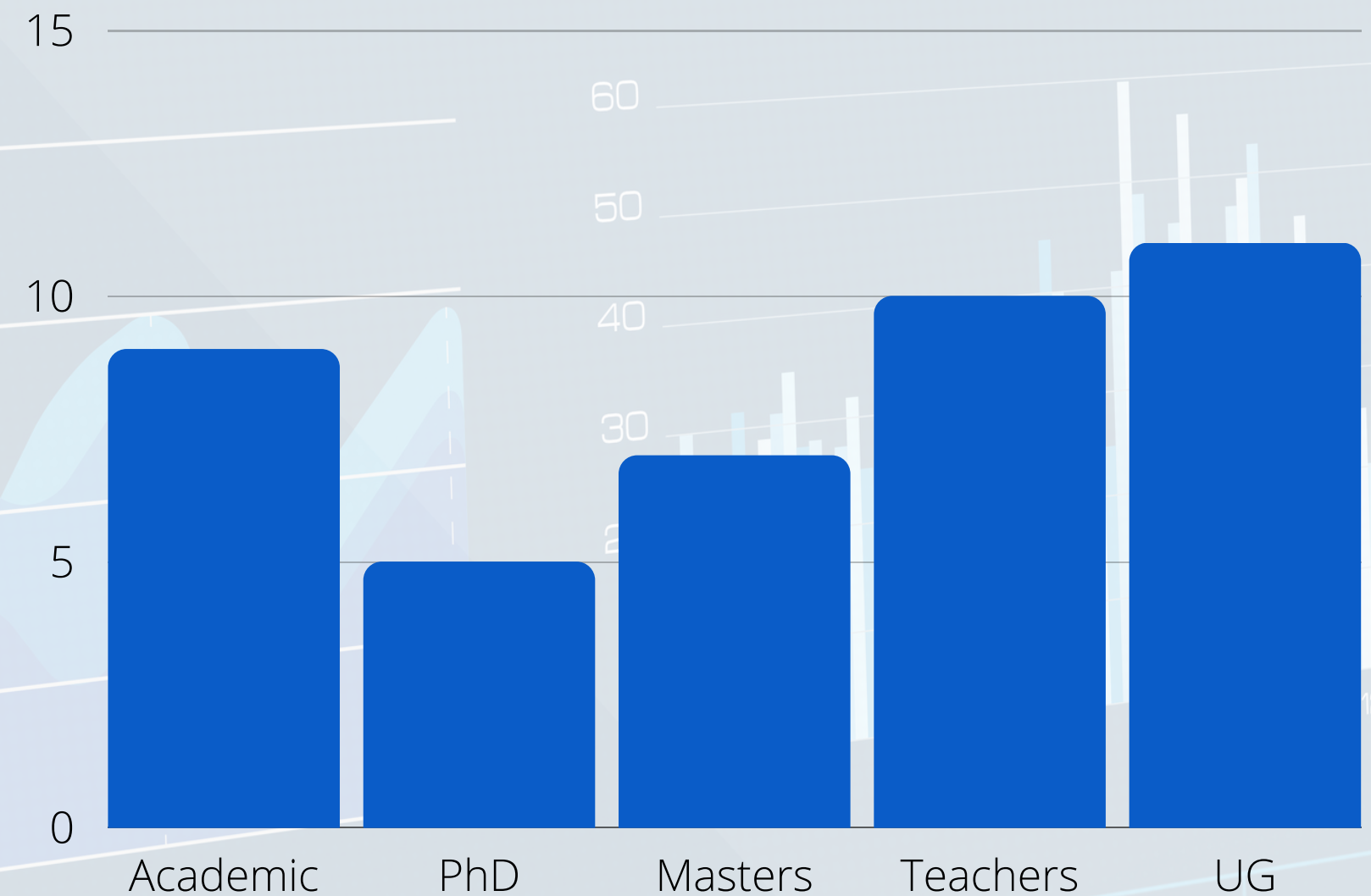


# PRESENTERS & PARTICIPANTS

**PARTICIPANTS**  
92



**PRESENTERS**  
59



The number of presenters in each category is increasing. The trend is expected to raise in future.

The conference has attracted more than 150 local and international researchers. Active participation was evident in each track.



Judges from local and international universities were assigned to evaluate the quality of the presentations. For more details please refer to our programme book.

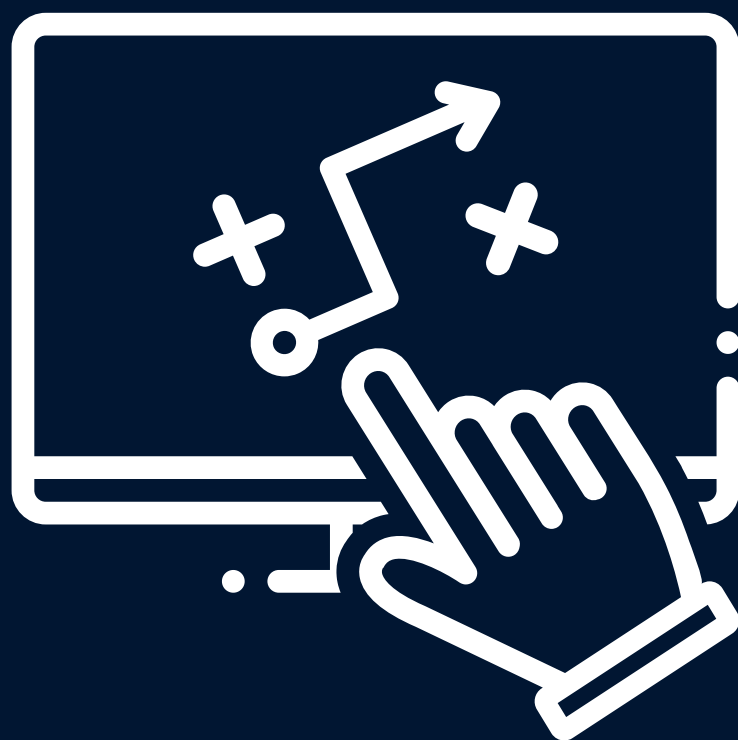






MIRCELE 2022

## SPEAKERS



- **Assoc Prof Dr Muhammad Helmi Norman**  
**(Universiti Kebangsaan Malaysia, Malaysia)**
- **Prof Aurelio P. Vilbar**  
**(University of the Philippines, Cebu)**
- **Dr Csaba Z Szabo**  
**(University of Nottingham, Malaysia)**
- **Prof Dr Hjh Hazita Azman**  
**(Universiti Kebangsaan Malaysia)**
- **Dr Abdullah bin Mohd Nawi**  
**(Universiti Teknologi Malaysia, Malaysia)**
- **Dr Rachanee Dersingh**  
**(King Mongkut University of Technology Thonburi, Thailand)**

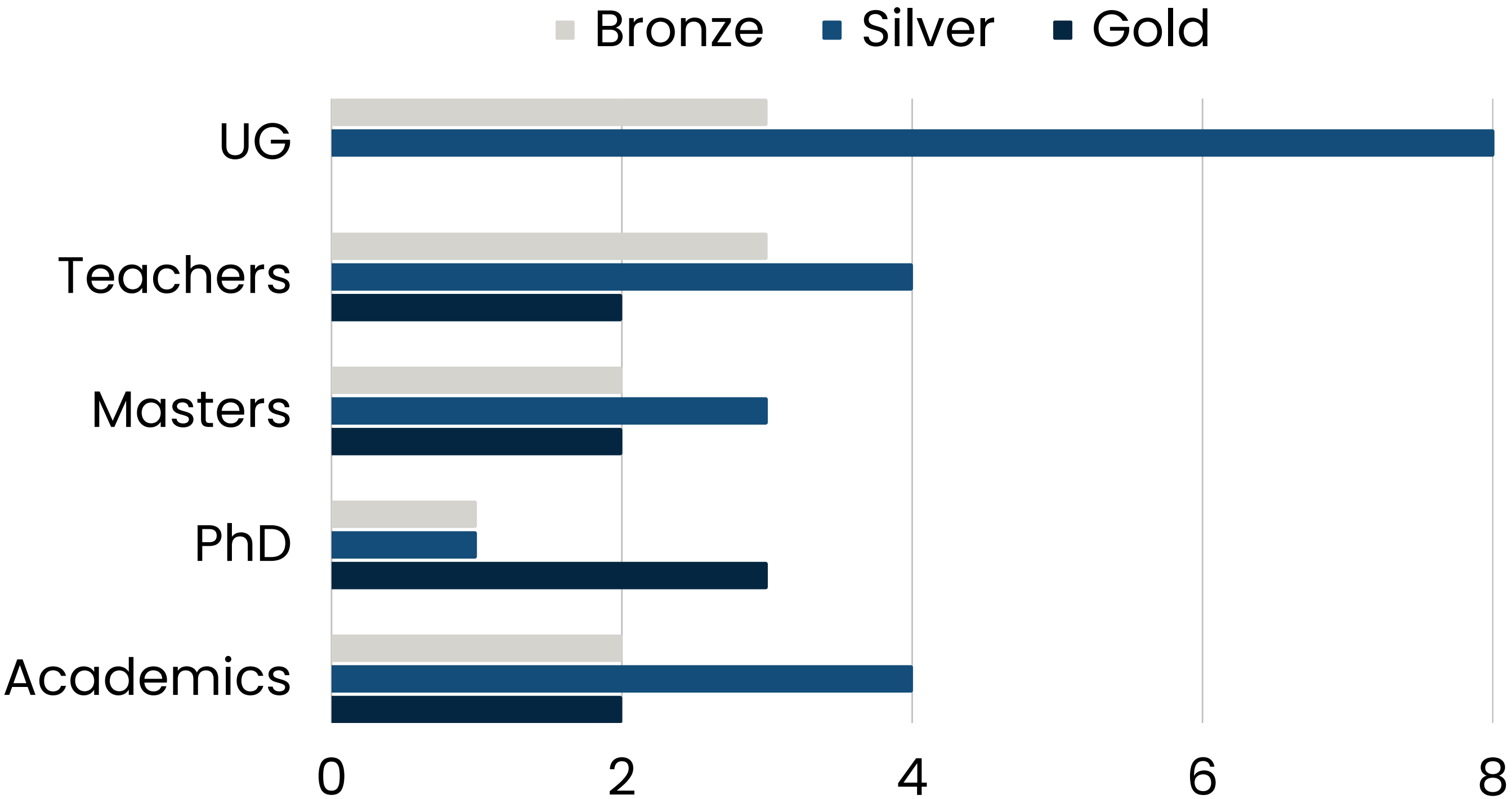
# AWARD RECIPIENTS





# Award Recipients for Each Category: Data Analysis

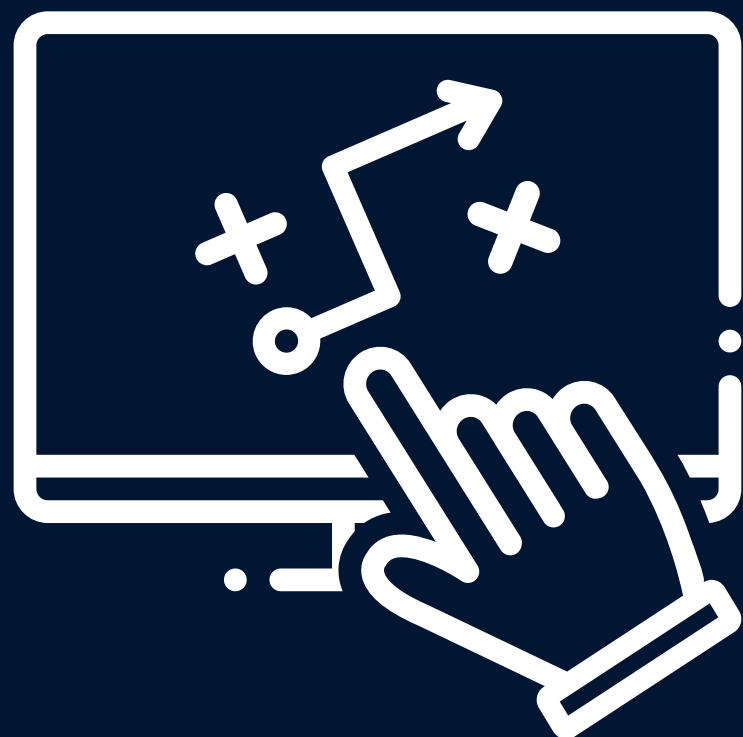
- Different judges, locals and internationals, were assigned to each category to evaluate the presentations.





MIRCELE 2022

Student Teachers  
Undergraduates



## BRONZE AWARD RECIPIENTS

- **HEMA DARSHINAA RAJOO**
- **SITI MYSARAH BINTI MOH SHUIB**
- **JOYCE VOON ERN SZE**





**MIRCELE 2022**

Student Teachers  
Undergraduates



## **SILVER AWARD RECIPIENTS**

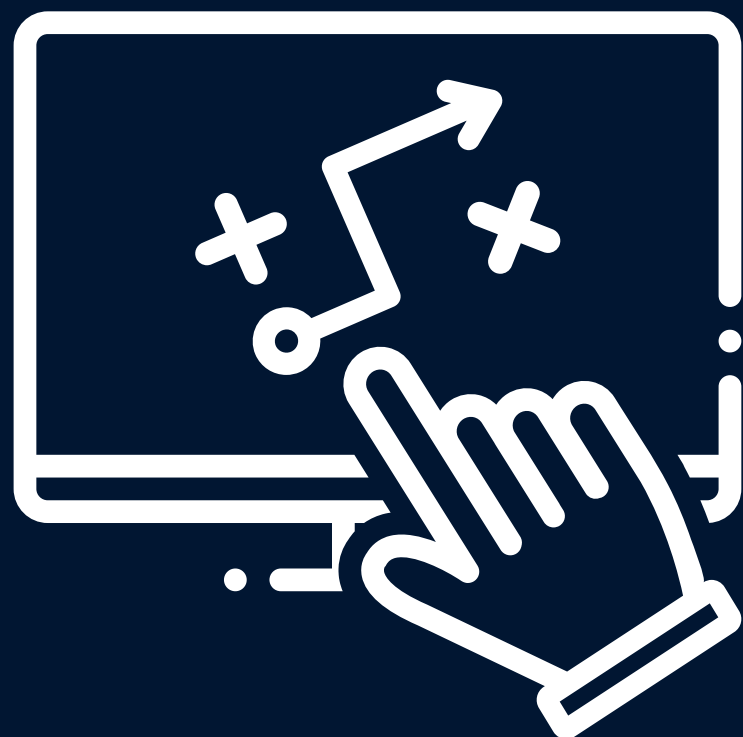
- **NUR HAZWANI & NUR AIN IZYAN**
- **TIMOTHY JAMES JOACHIMDASS**
- **MOHAMAD RIDHUAN BIN NASARUDIN**
- **SITI FAIZUN AIDA BINTI MOHD YASIN**
- **POONG GUI WEI**
- **NUR SYAFIQA BINTI SABRI**
- **MUHAMMAD HAFIFIE BIN MAHAZAN**
- **AIZZAH IZYANI**





**MIRCELE 2022**

**TEACHERS**



## **BRONZE AWARD RECIPIENTS**

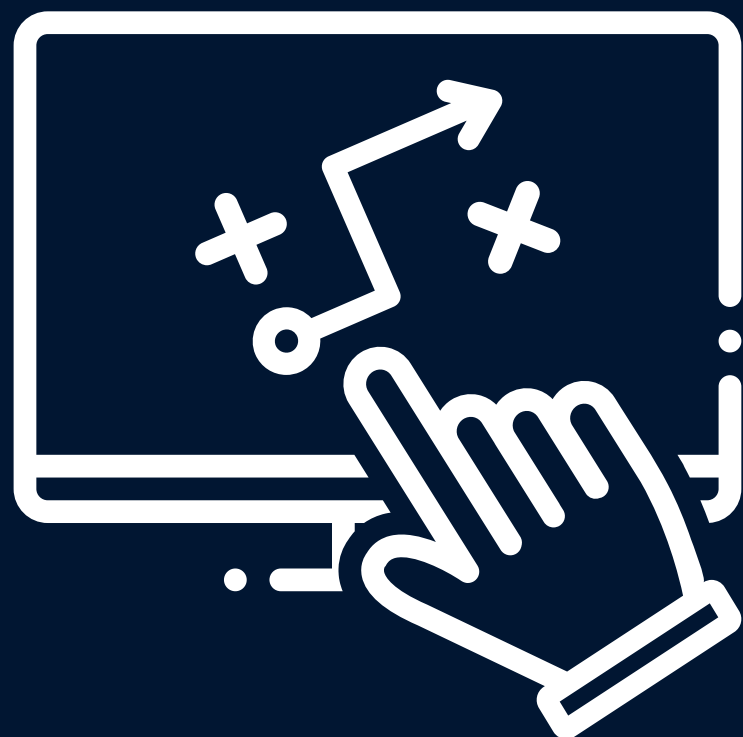
- **NURWIRDATHINAGIHA BINTI HAMDAN**
- **MUHAMMAD FIRDAUS MOHD NOH**
- **MAHESWARAN MUNIANDY**





**MIRCELE 2022**

**TEACHERS**



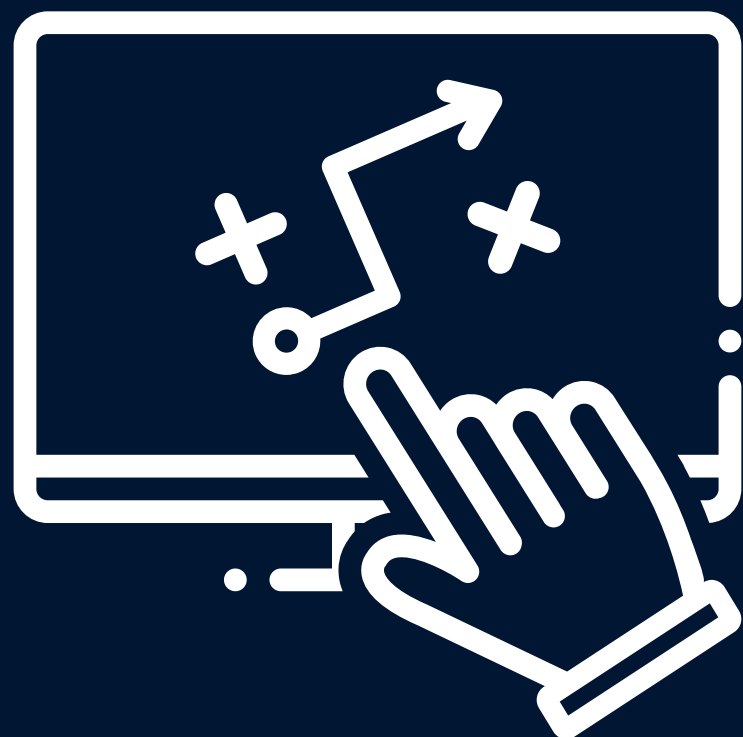
## **SILVER AWARD RECIPIENTS**

- **NORHIDAYU BINTI ROSMAN**
- **AIDA HARTINI BINTI ABDULLAH**
- **MAMI SAKASHITA & FUMIYA SHINOZAKI**
- **KHONG SEE MOI**



**MIRCELE 2022**

**TEACHERS**



## **GOLD AWARD RECIPIENTS**

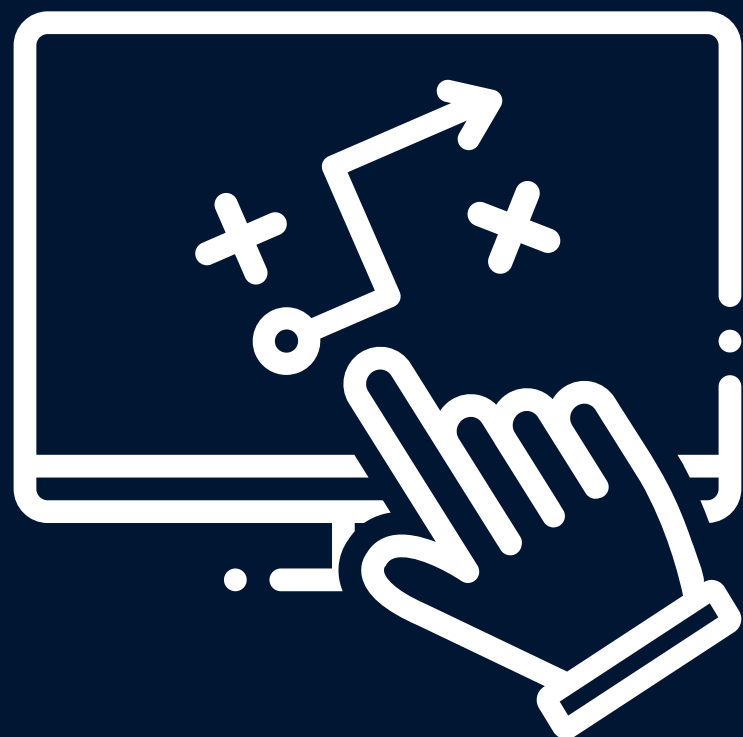
- **AISHAH BINTI HAJI OTHMAN**
- **ANITA KALIMUTHU**





**MIRCELE 2022**

**MASTER'S**



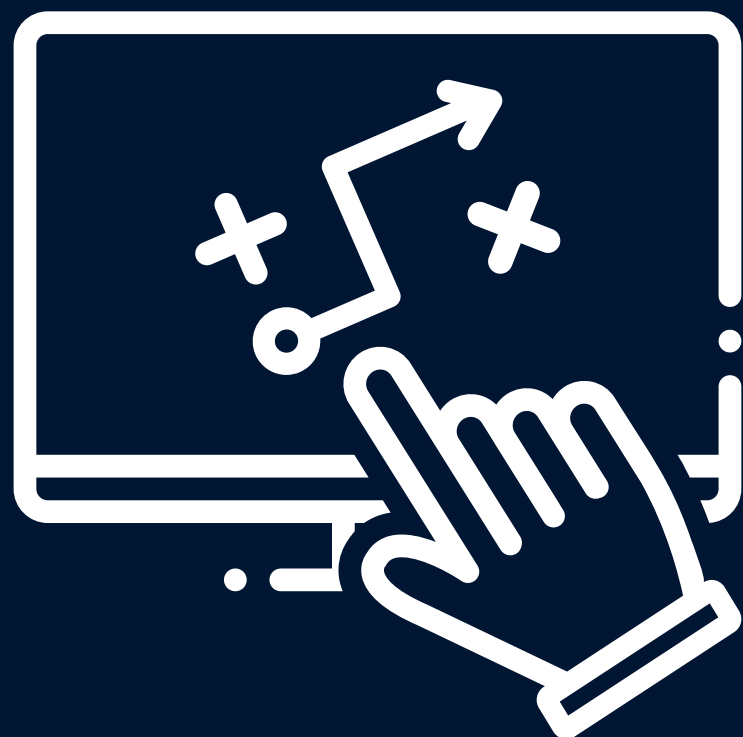
## **BRONZE AWARD RECIPIENTS**

- **MUHAMAD FIRDAUS MOHD NOH**
- **ASSHADWI PANEERSELVAM**



**MIRCELE 2022**

**MASTER'S**



## **SILVER AWARD RECIPIENTS**

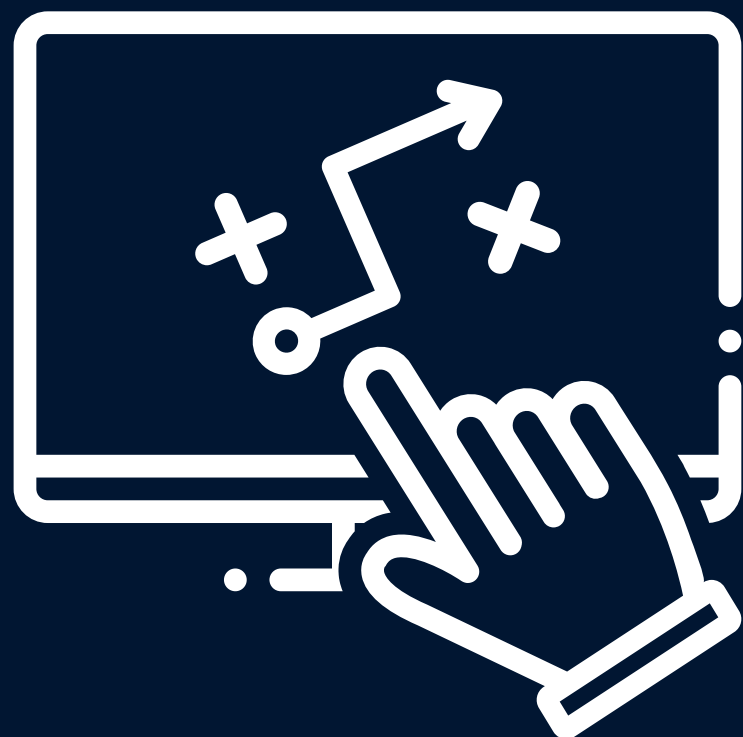
- **ANGELIA MARJORIE FABIAN & YVONNE  
MICHELLE CAMPBELL**
- **ALLY TIAN LEE**
- **MELISSA WONG LING LEE**





**MIRCELE 2022**

**MASTER'S**



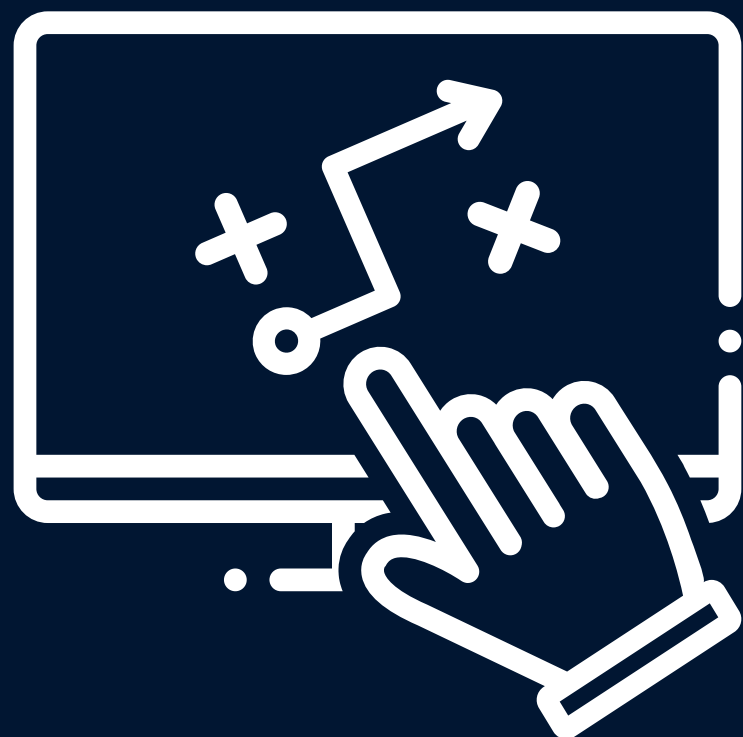
## **GOLD AWARD RECIPIENTS**

- **EMILY NEOH GAIK KIN & LIM JIA WEI**
- **GRACE GAYATHRI A/P RAMAKARSININ**



**MIRCELE 2022**

**PHD**



## **BRONZE AWARD RECIPIENTS**

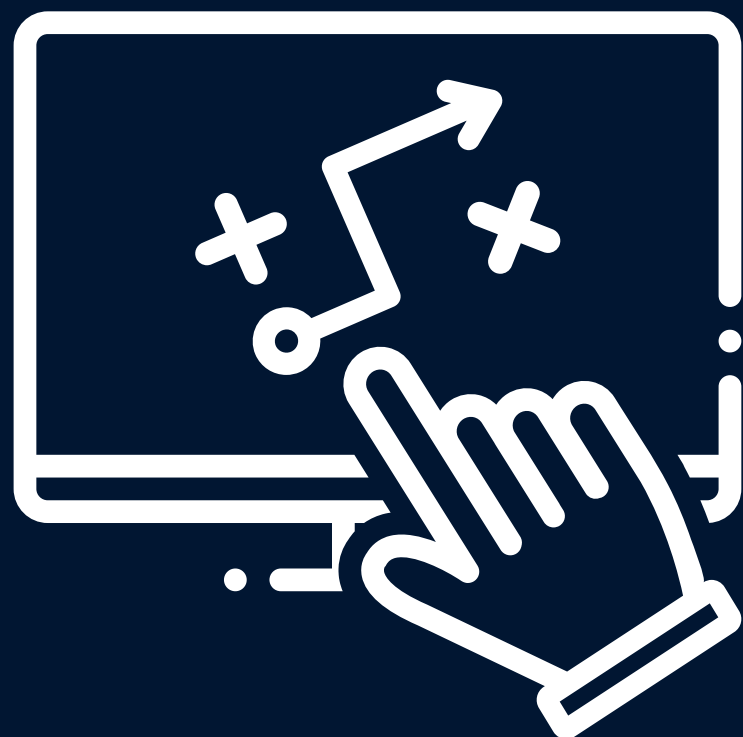
- **THILIP KUMAR MOORTHY & JABEELA SHIRLIN**





MIRCELE 2022

PHD



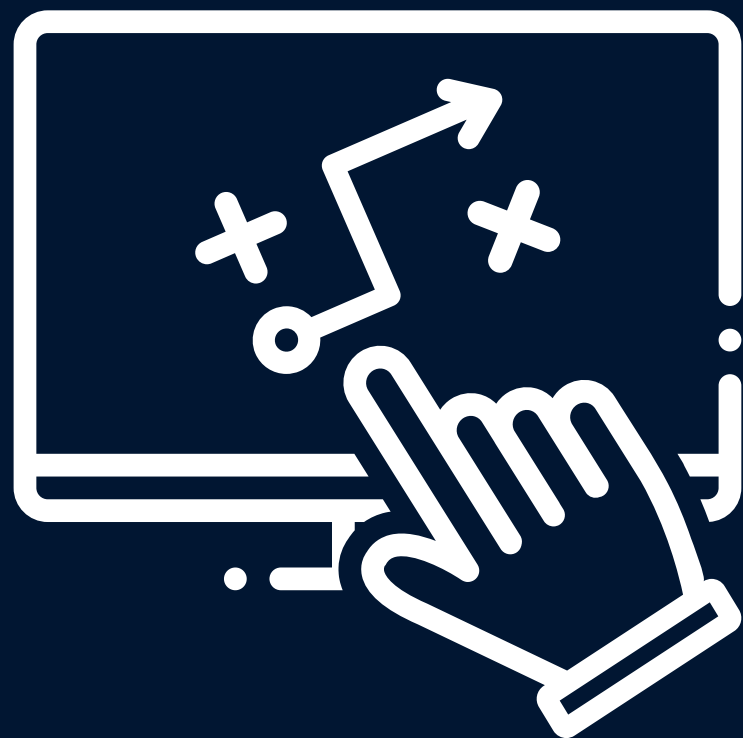
## SILVER AWARD RECIPIENTS

- TIONG NGEE DERK



**MIRCELE 2022**

**PHD**



## **GOLD AWARD RECIPIENTS**

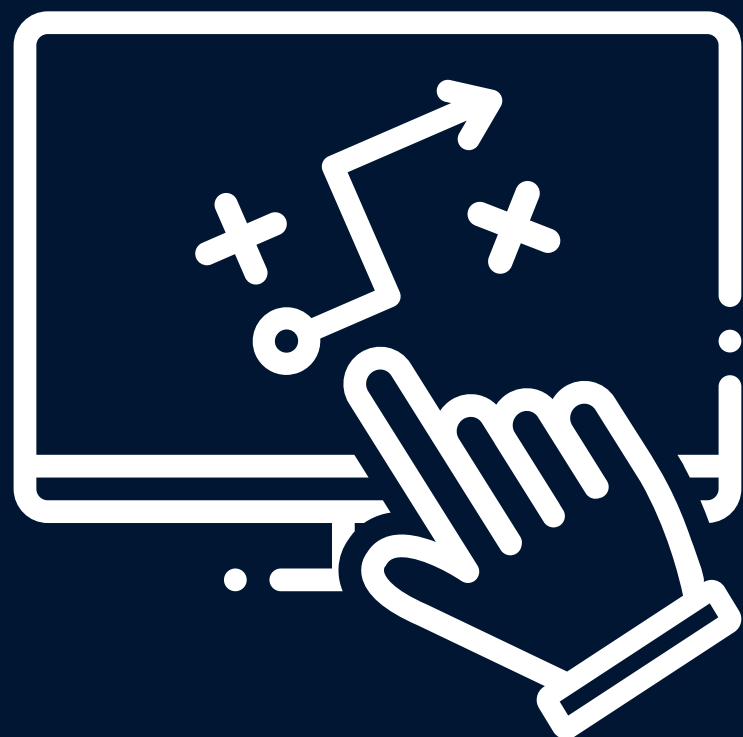
- **KOMALAH THARMALINGAM, ADELINA BINTI ASMAWI & LIM JIA WEI**
- **ALI ALSAHLANEE**
- **SAMAH YASLAM SALEH BAAGBAH**





MIRCELE 2022

ACADEMICS



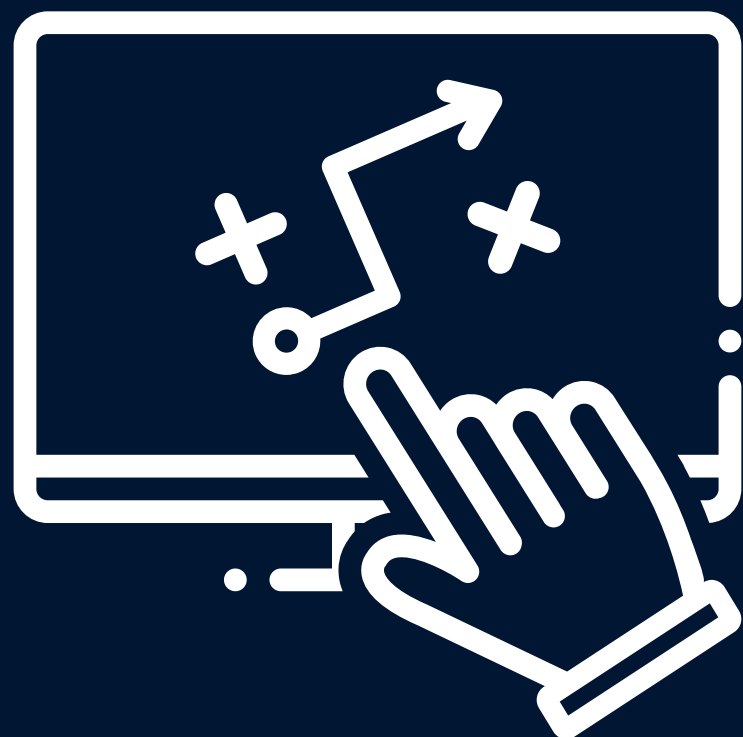
## BRONZE AWARD RECIPIENTS

- YVONNE MICHELLE CAMPBELL
- DARON B LOO



**MIRCELE 2022**

**ACADEMICS**



## **SILVER AWARD RECIPIENTS**

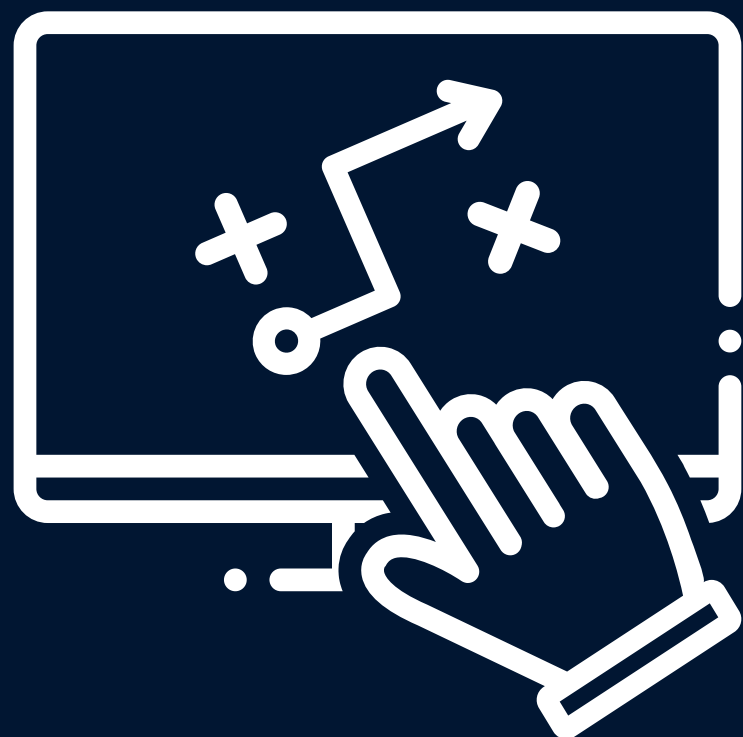
- **LINIRA GHAZALI, ARIFUDDIN  
ABDULLAH, & LIYANA AHMAD AFIP**
- **LO YUEH YEA**
- **KALAI VANII RAJANDRAM & KAISHAN  
KONG**
- **LIM AI TENG, SOO KUM YOKE, UMAIRAH  
NAJIHAH ISMAIL**





**MIRCELE 2022**

**ACADEMICS**



## **GOLD AWARD RECIPIENTS**

- **LIM JIA WEI, TEE MENG YEW**
- **NURLIANA DALILA**





# INTERNATIONAL FORUM DISCUSSION



Search

## Methodology

Multiple exploratory case study design

- 3 case studies: Bangladesh, Malaysia, Nepal
- At least 3 participants from each country
- Semi-structured interviews
- Qualitative data analysis method

Bangladesh	Malaysia	Nepal
Three different institutions - Participant BR - Participant BS - Participant BP	One higher education institution - Participant MA - Participant MB - Participant MC	Three different institutions - Participant NA - Participant NB - Participant NC

## MIRCELE 2022: FORUM 1

Unlisted



ME...  
496...

Analytics

Edit video

0



Search



## MIRCELE 2022: FORUM 2

Unlisted



ME...  
496...

Analytics

Edit video

0



Search

## Education during the Pandemic: Perspectives of Secondary School English Teachers from Malaysia, Nepal and Bangladesh

Cross-Border Research by BELTA,  
MELTA and NELTA

Team Leader:  
Motikala (NELTA)  
Presenters:  
Ahmed (BELTA)  
David (MELTA)

## MIRCELE 2022: FORUM 3

Unlisted



ME...  
496...

Analytics

Edit video

0



# FEEDBACK

Lorem ipsum dolor sit amet, consectetur adipiscing elit. Vestibulum metus orci, suscipit eget hendrerit in, imperdiet maximus massa. Pellentesque pretium sapien in leo dictum, in aliquam enim sollicitudin. Mauris quam nunc, feugiat eleifend sapien nec, elementum rutrum enim. Mauris ornare velit a euismod efficitur.

